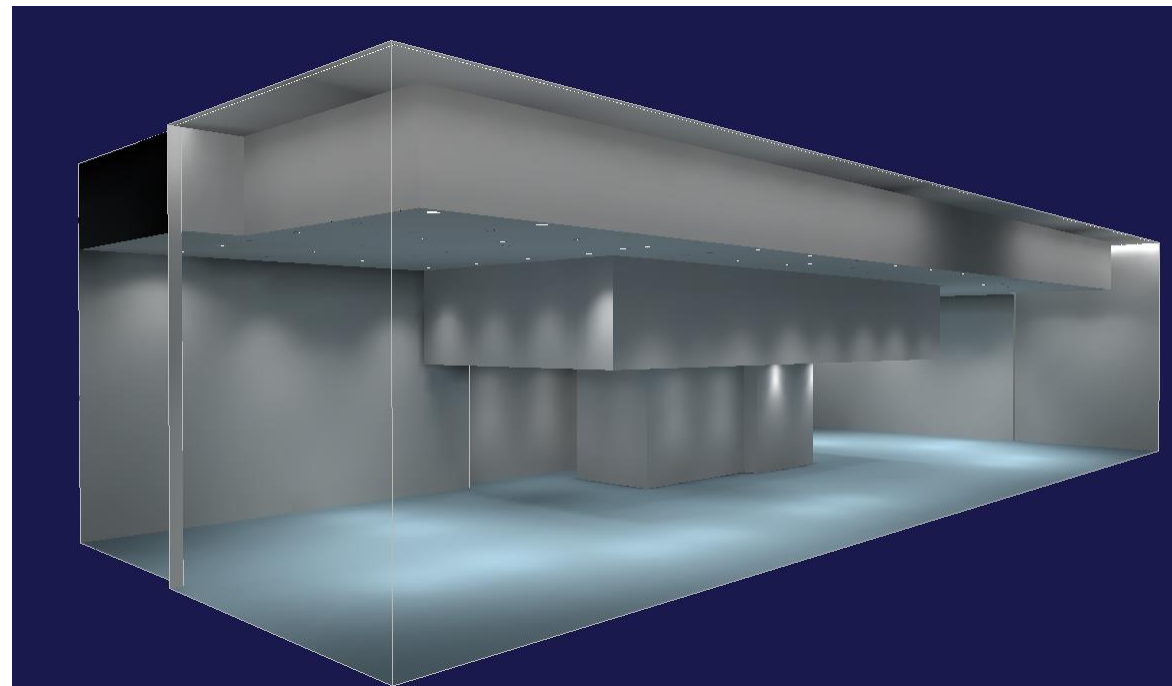
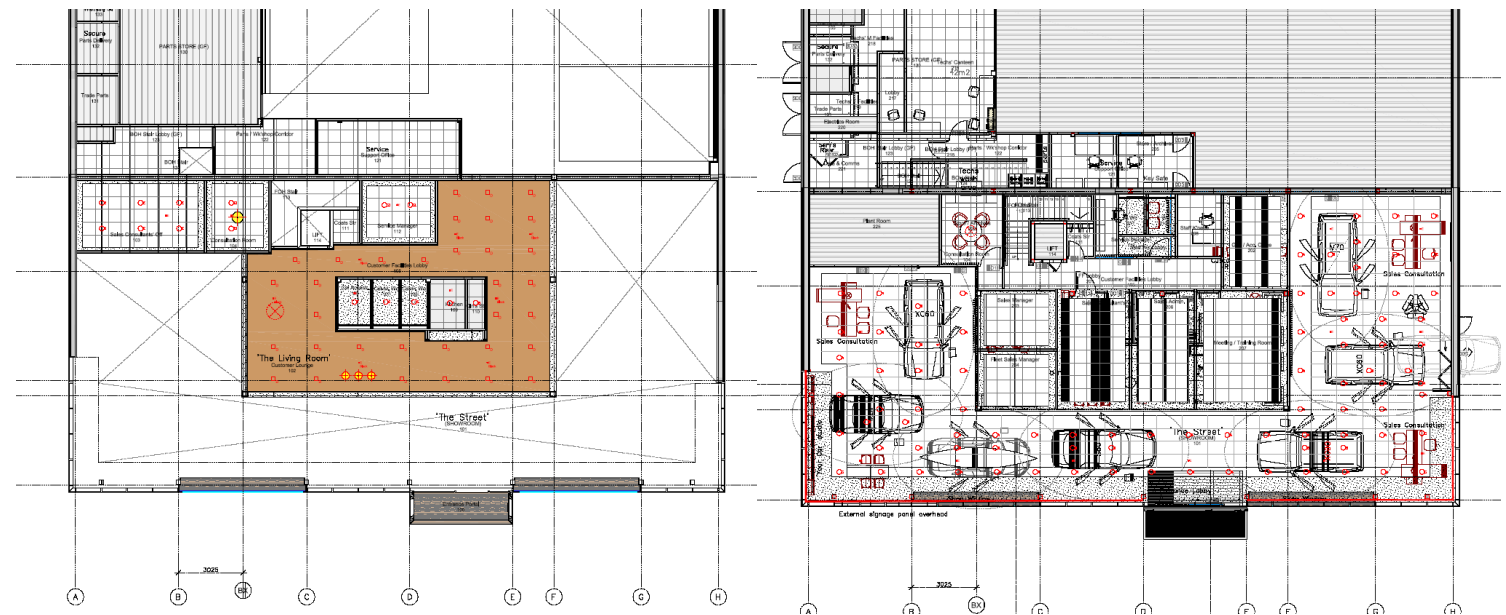




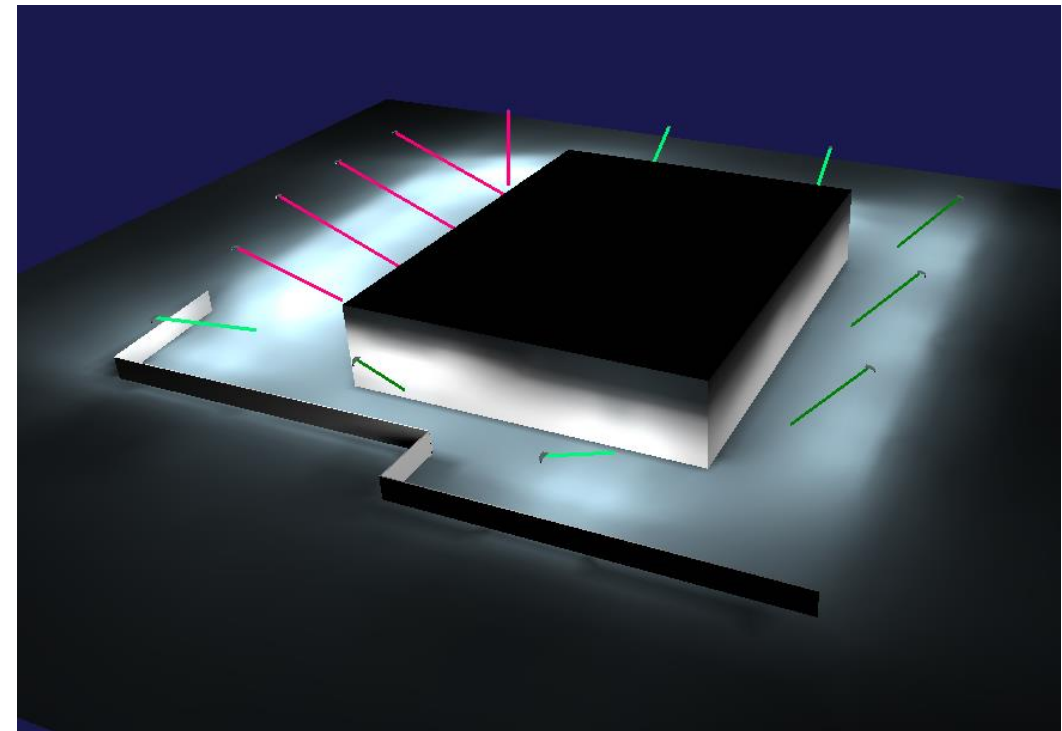
For the purpose of the lighting design, the Showroom shall be considered as three distinct areas:

- The Street – Car Display
- The Street – Sales Desks
- The Living room



The external lighting will be considered as two separate areas:

- Used Car display
- General Area



Products



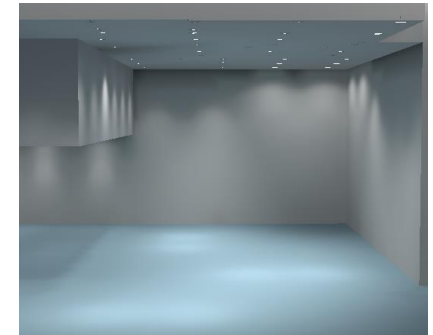
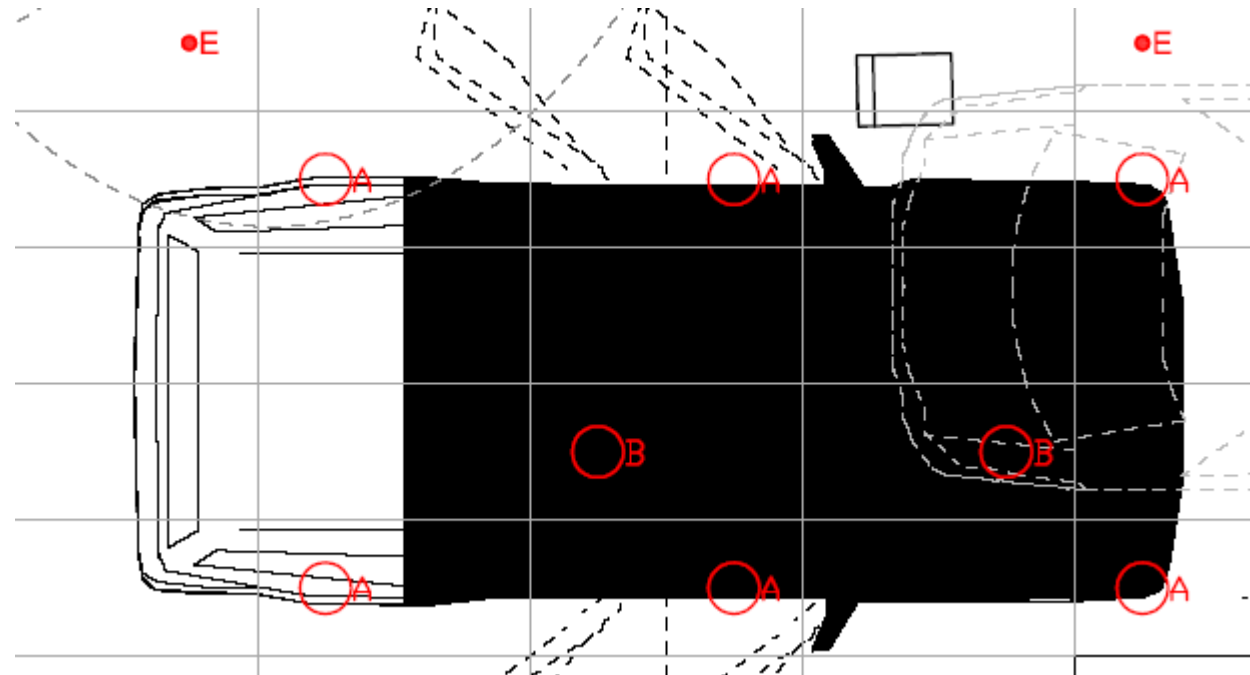
OA

N388.01
Pixel Plus recessed spotlight
35.8W LED 4000K
Flood optic 36°
White finish

OB

N389.01
Pixel Plus recessed spotlight
35.8W LED 4000K
Wide flood optic 48°
White finish

NOTE: Specified products may change depending on the ceiling height.



Eav	1450 lx
Emin	1110 lx
E _{max}	1830 lx
Emin/Em	1:1.3 (0.77)
Emin/E _{max}	1:1.65 (0.61)

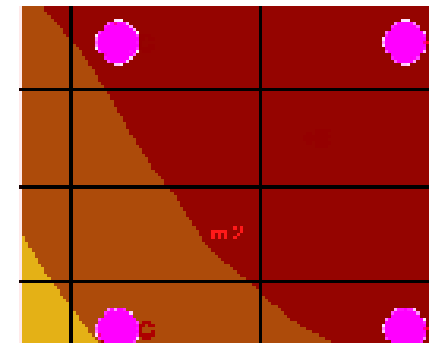
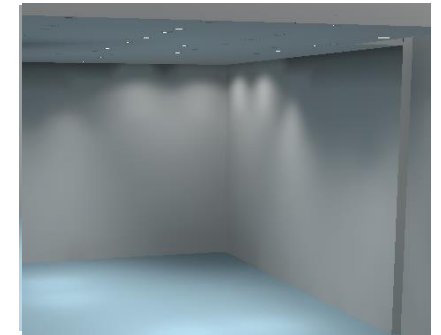
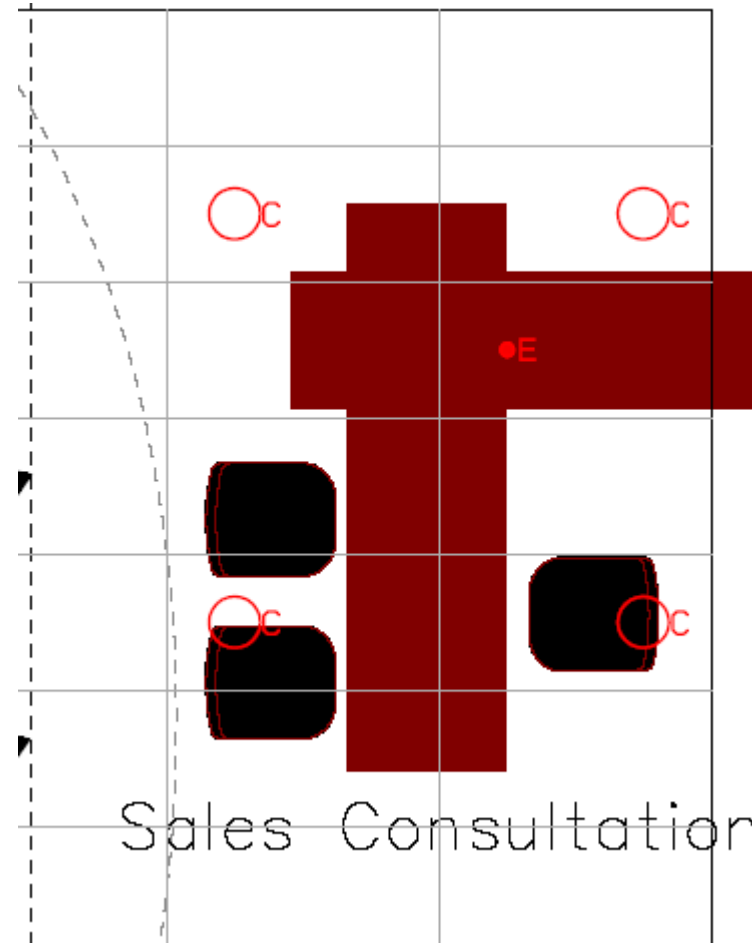
Lighting Design Proposal

- Allow at least 6 spotlights per vehicle to provide an average level of illumination of no less than 1200 lux on the vehicle as measured at 850mm above floor finished level.
- The lighting shall be designed to give drop off in the level of illumination immediately adjacent the vehicles.
- Fittings are generally circular downlights with white bezel
- Colour temperature 4000K

Product



QF59.39
Easy recessed downlight
24.3W LED 4000K
General optic 78°
White/aluminium finish



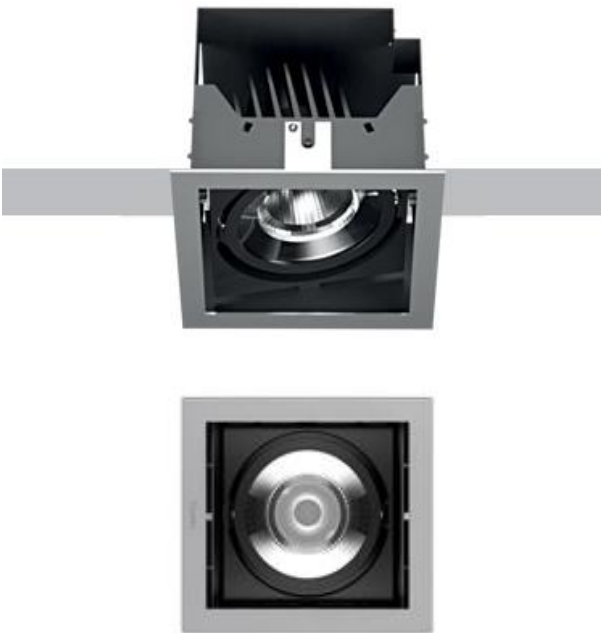
Eav	515 lx
Emin	265 lx
Emax	906 lx
Emin/Em	1:1.94 (0.52)
Emin/Emax	1:3.41 (0.29)

Lighting Design Proposal

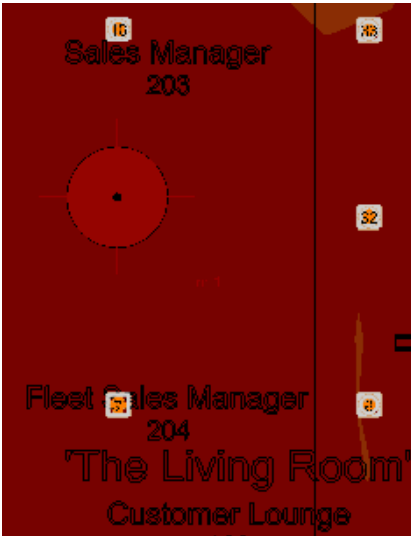
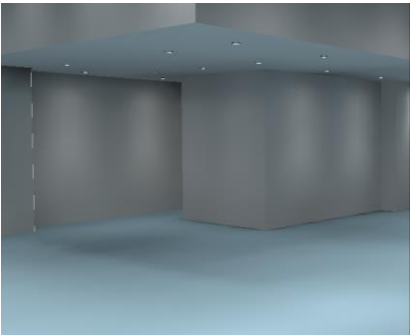
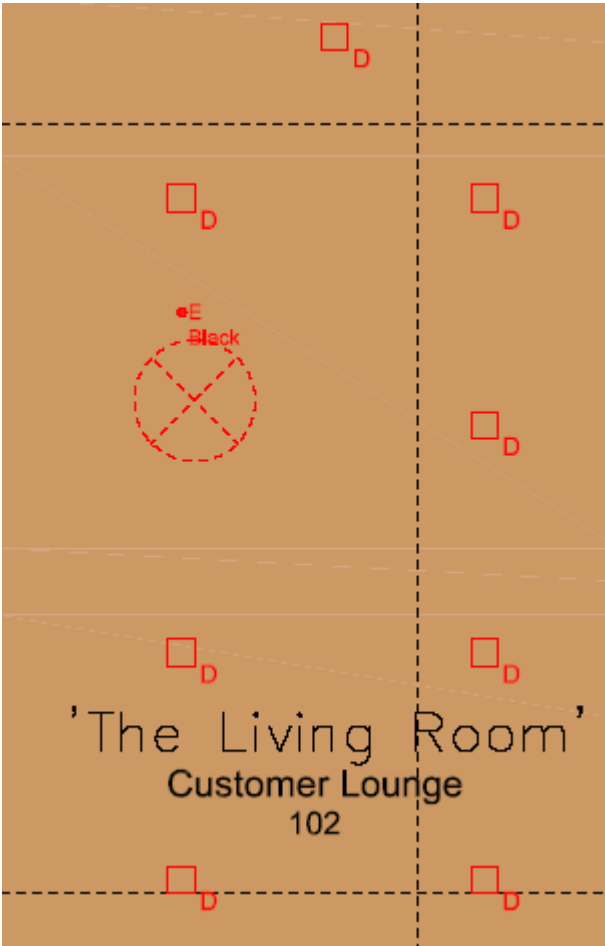
- The lighting shall be designed to give an average level of illumination across the sales desk areas of no less than 500lux at desk height
- Fittings are generally circular downlights with white bezel
- Colour temperature shall be 4000K

NOTE: Specified product may change depending on the ceiling height.

Product



P918.04
Deep Frame recessed spotlight
30.8W LED 3000K
Wide flood optic 48°
Black/black finish



Eav	376 lx
Emin	111 lx
Emax	543 lx
Emin/Em	1:3.4 (0.29)
Emin/Emax	1:4.91 (0.2)

Lighting Design Proposal

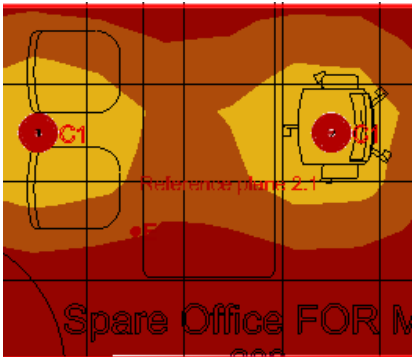
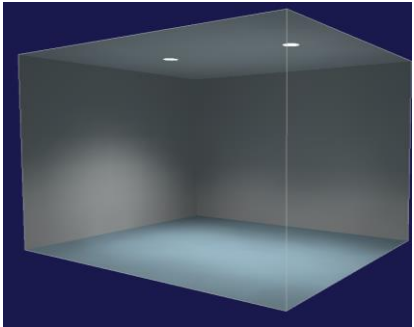
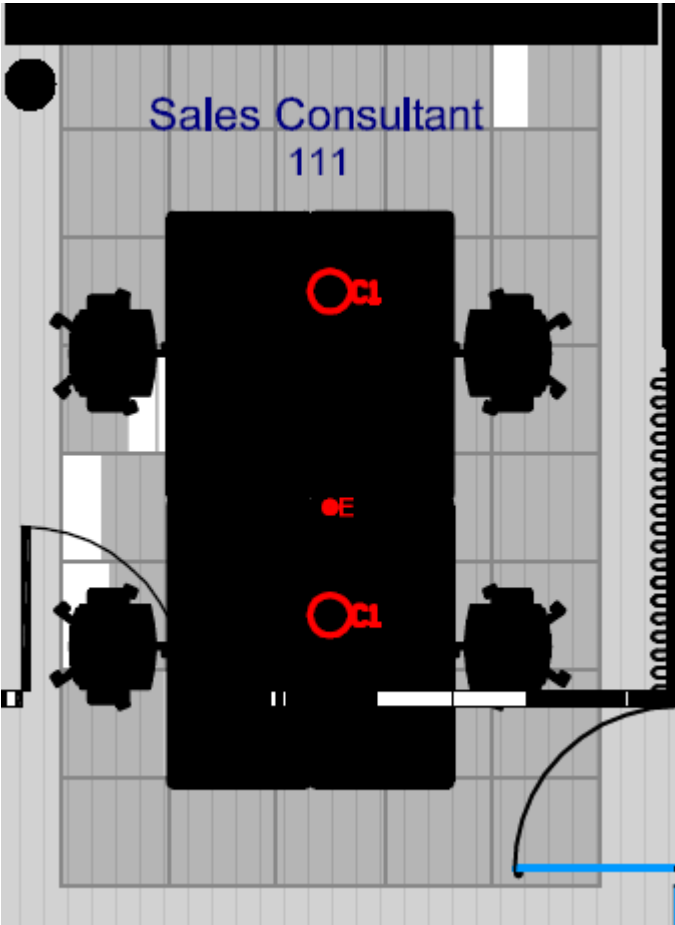
- The Café and lounge areas shall be 300 – 400 lux
- Colour temperature should be 3000K
- Fittings in timber slatted ceilings are generally square adjustable fittings with a circular head in black. Fitting to be between 160 -180 square.

NOTE: Specified product may change depending on the ceiling height.

Product



QF97.39
Easy recessed downlight
26.3W LED 3000K
UGR<19 optic
White/aluminium finish



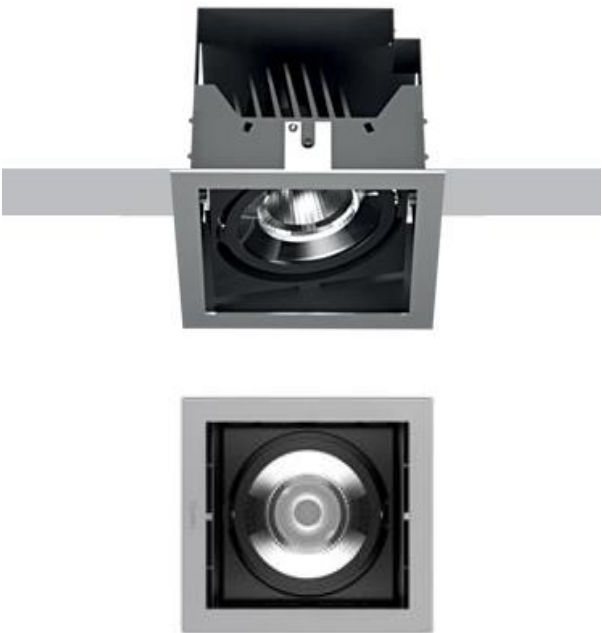
Em	557 lx
Emin	139 lx
Emin/Eav (Uo)	0.25
Emin/Emax (Ud)	0.15
UGR (2.6H 3.2H)	<=18.2
Position	0.75 m

Lighting Design Proposal

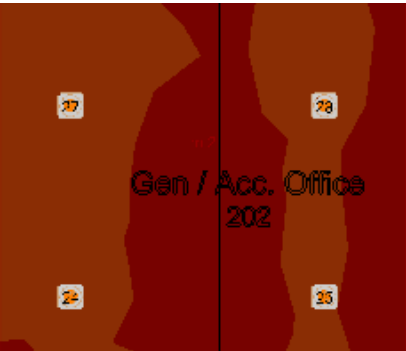
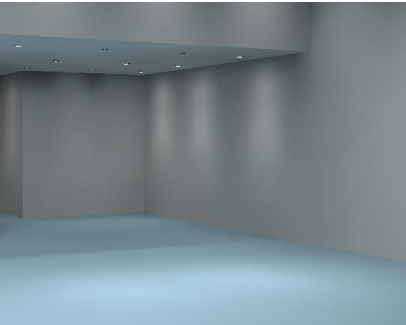
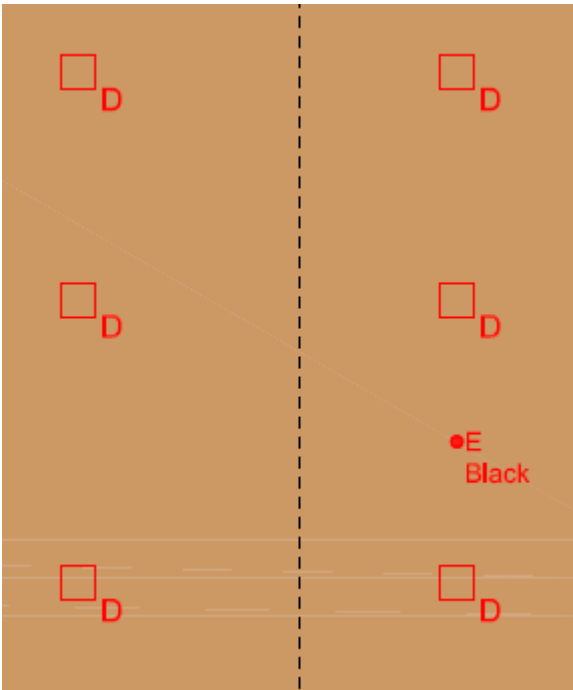
- Offices shall be 500 lux at desk working plane
- Colour temperature should be 3000K
- Fittings in offices are generally circular downlights with white bezel

NOTE: Specified product may change depending on the ceiling height.

Product



P918.04
Deep Frame recessed spotlight
30.8W LED 3000K
Wide flood optic 48°
Black/black finish



Eav	512 lx
Emin	379 lx
Emax	667 lx
Emin/Em	1:1.35 (0.74)
Emin/Emax	1:1.76 (0.57)

NOTE: Specified product may change depending on the ceiling height.

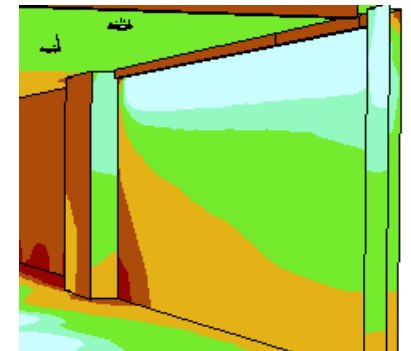
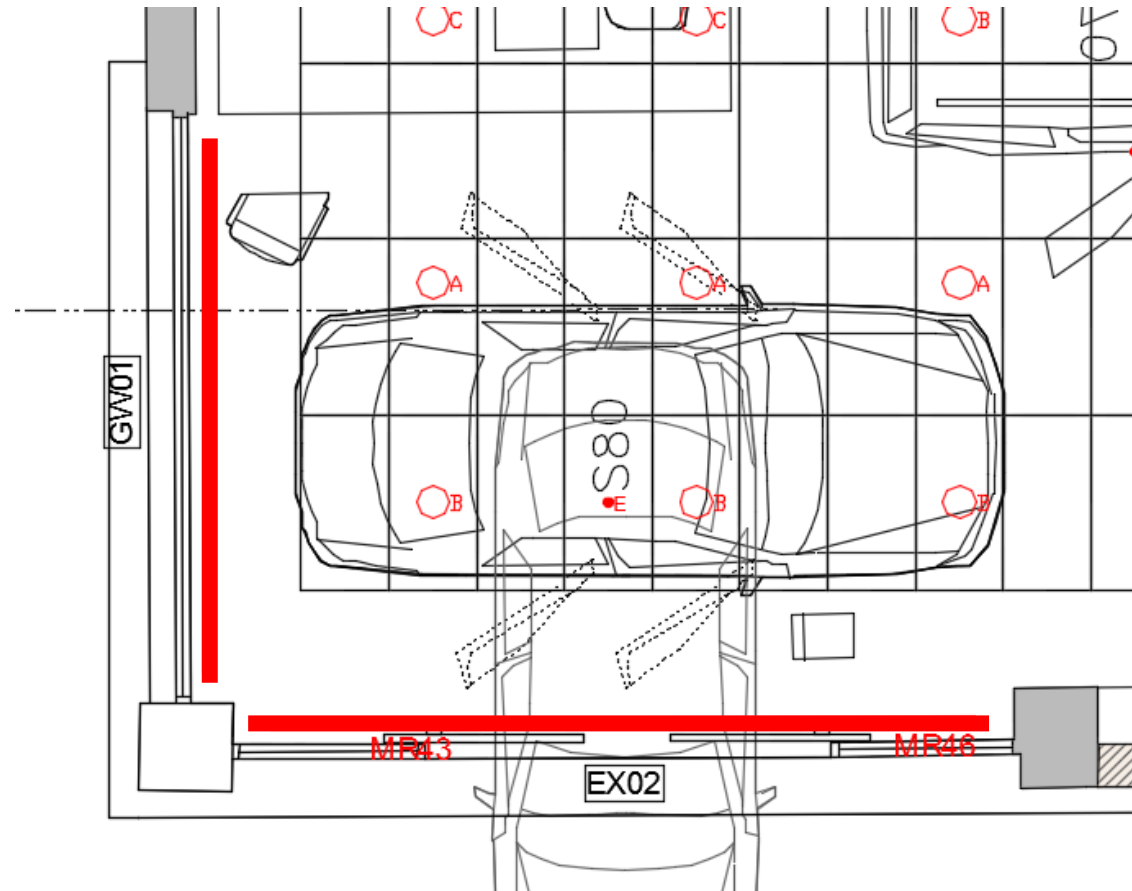
Lighting Design Proposal

- The Living space offices shall be 500 lux at desk working plane
- Colour temperature should be 3000K
- Fittings in timber slatted ceilings are generally square adjustable fittings with a circular head in black. Fitting to be between 160 -180 square.

Products



N179.01
LED Strip surface mounted
LED tape in extrusion.
4000K 19.6W/M



Lighting Design Proposal

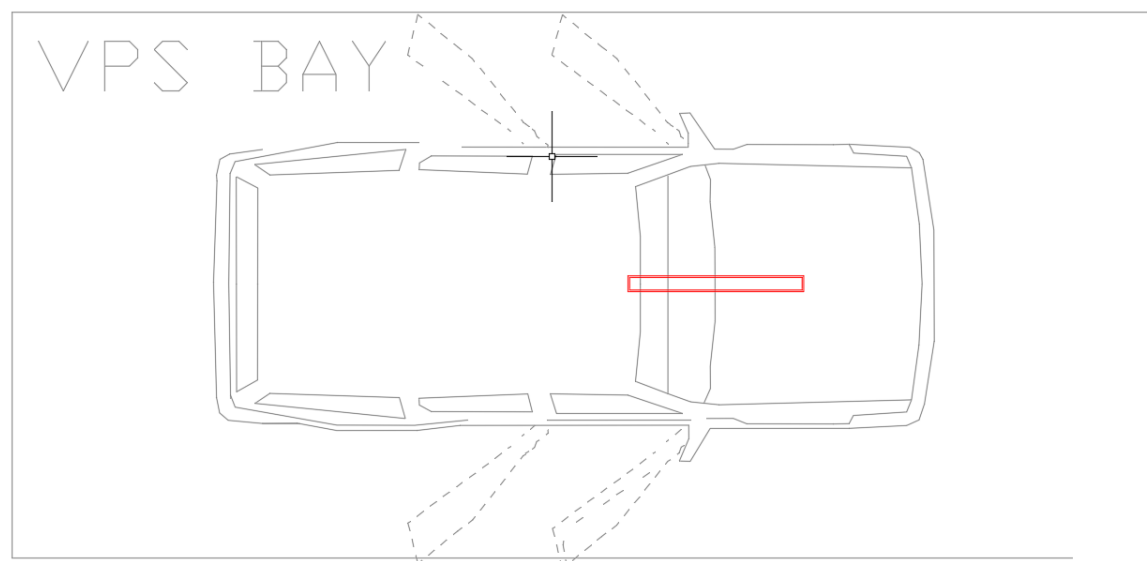
- Perimeter lighting at high level adjacent the glazing to provide a consistent external appearance to the glazed cladding during hours of darkness.
- Colour temperature should be 4000K
- Perimeter light fittings are generally in 60 or LED tape (depending on building structure)

NOTE: Perimeter lighting in the window is required only if the bulk head is causing shadow on window. This has to be confirmed by client if required.

Product



BN00.15
Linealuce Compact 75 recessed uplight
39.7W LED 4000K
Flood optic 42°
Grey finish



Value grid [lx]

(2.0)	+2.6	+3.5	+5.0	+7.3	+11	+18	+28	+37	+39	+32	+22	+15	+9.7	+7.2
+2.2	+2.9	+4.1	+6.0	+9.7	+17	+32	+63	+102	+112	+82	+45	+23	+13	+8.9
+2.3	+3.1	+4.4	+6.8	+12	+23	+55	+157	+344	+401	+241	+88	+34	+16	+10
+2.3	+3.1	+4.5	+7.1	+12	+26	+69	+247	+624	(741)	+412	+123	+39	+18	+11
+2.3	+3.1	+4.4	+6.8	+12	+23	+53	+149	+324	+377	+228	+85	+33	+16	+10
+2.2	+2.9	+4.0	+6.0	+9.5	+17	+31	+60	+96	+105	+77	+43	+23	+13	+8.8
(2.0)	+2.6	+3.5	+4.9	+7.2	+11	+17	+26	+35	+37	+31	+22	+14	+9.5	+7.0

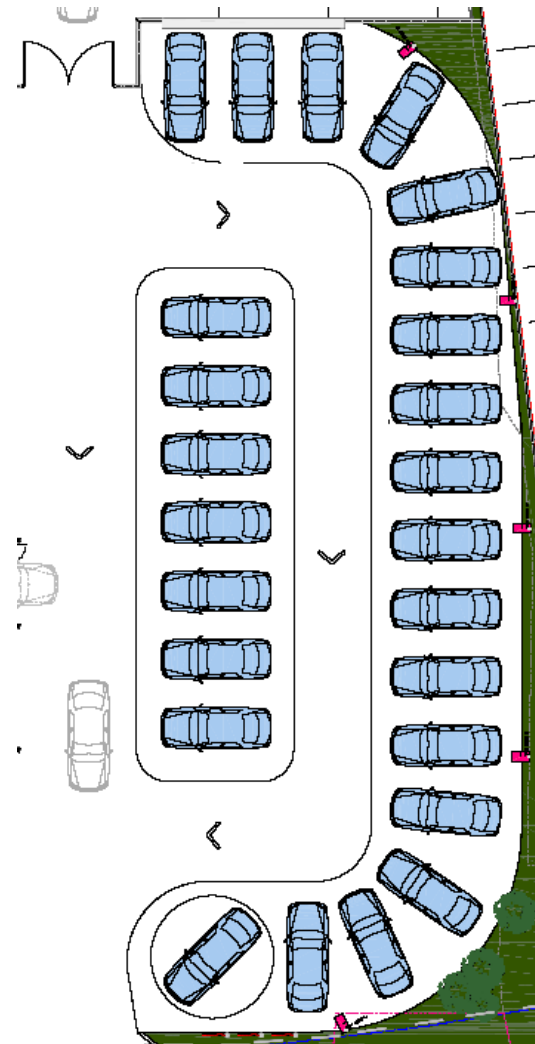
Lighting Design Proposal

- Allow one fitting per VPS bay recessed in ground under vehicle engine
- Colour temperature 4000K

Product



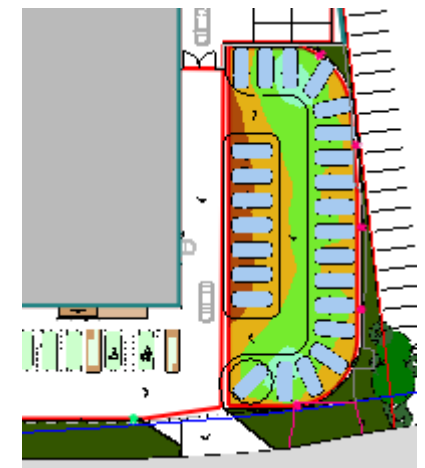
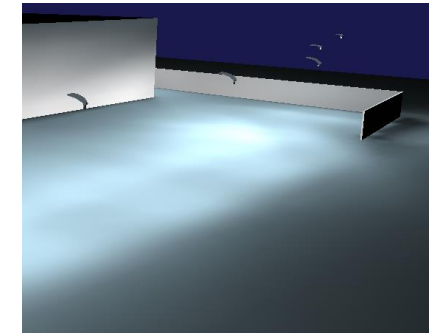
ED78.15
Wow street light
101.7W LED 4000K
A60 asymmetric optic
Grey finish



Lighting Design Proposal

- Wow LED column mounted projectors to achieve 50 Lux
- Colour temperature should be 4000K

NOTE: Different products may be selected based on the configuration of the carpark.

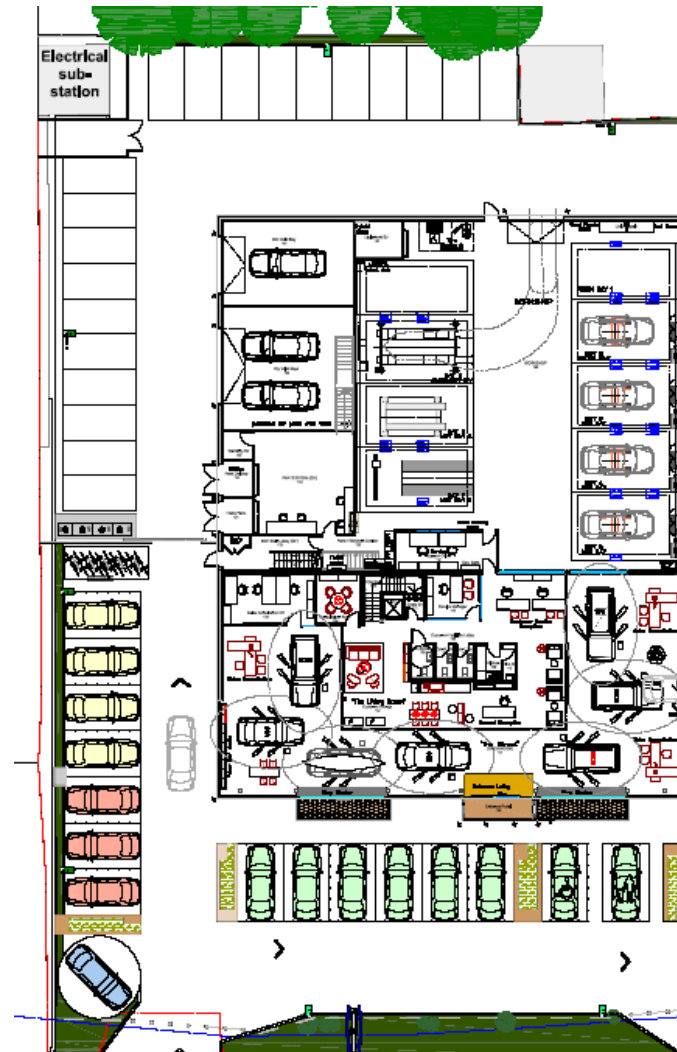


Eav	50.1 lx
Emin	22.7 lx
Emax	98.6 lx
Emin/Em	1:2.2 (0.45)
Emin/Emax	1:4.34 (0.23)

Product



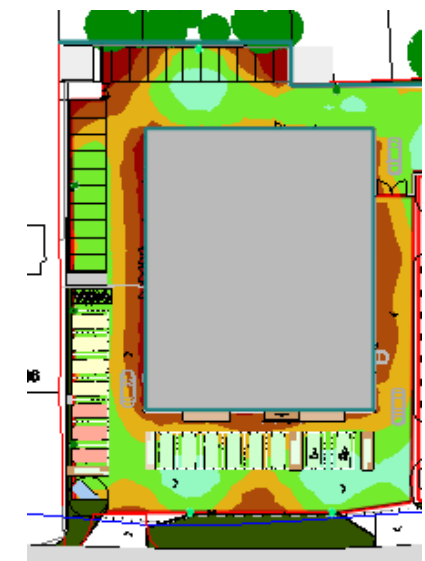
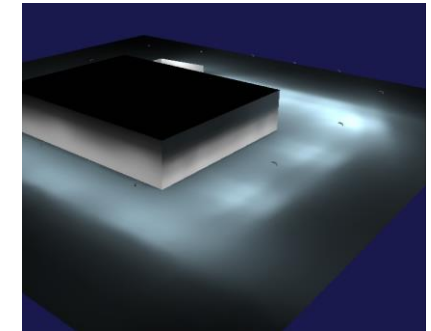
EC39.15
Wow street light
75.4W LED 4000K
A60 asymmetric optic
Grey finish



Lighting Design Proposal

- Wow LED column mounted projectors to achieve 20 Lux
- Colour temperature should be 4000K

NOTE: Different products may be selected based on the configuration of the carpark.



Eav	22 lx
Emin	5.8 lx
E _{max}	51.4 lx
E _{min} /E _m	1:3.79 (0.26)
E _{min} /E _{max}	1:8.88 (0.11)

The following pages contains datasheets for products specified in the guidelines.
Products selected for specific project may be different based on the ceiling height
and layout of the space.

Pixel Plus

Design iGuzzini

iGuzzini

Last information update: January 2020



extractable, adjustable, recessed LED luminaire - electronic control gear included

Product code
N388
Technical description

Extractable, adjustable, recessed luminaire for neutral white LED lamp. Passive heat dispersion system. Die-cast aluminium main body and frame; stainless steel rotation hinge. Rotation ring with safety cover in a high resistance thermoplastic material. Body adjusted with a manual manoeuvre device: internal 40° - external 65° - rotation on 355° axis. Reflector with high efficiency super-pure aluminium optic - flood beam angle. Die-cast aluminium lamp body closure ring. Tempered transparent glass screen. Electronic control gear supplied and connected to the luminaire.

Installation

recessed using steel springs in false ceilings with thicknesses starting at 1 mm; preparation hole Ø 195 mm

Dimension (mm)
Ø205x152

Colour
White (01)

Weight (Kg)
1.7
Mounting

ceiling recessed

Wiring

on control gear box with quick-coupling connections

Complies with EN60598-1 and pertinent regulations



IP20

IP23

On the visible part of the product once installed

**Product configuration: N388****Technical data**

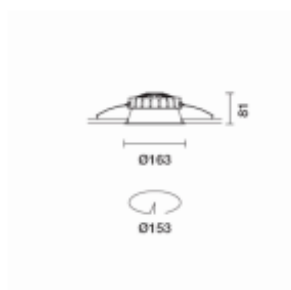
lm system:	4096	MacAdam Step:	2
W system:	35.8	Life Time LED 1:	50,000h - L80 - B10 (Ta 25°C)
lm source:	5000	Ballast losses [W]:	4.8
W source:	31	Lamp code:	LED
Luminous efficiency (lm/W, real value):	114.4	Number of lamps for optical assembly:	1
lm in emergency mode:	-	ZVEI Code:	LED
Total light flux at or above an angle of 90° [Lm]:	0	Number of optical assemblies:	1
Light Output Ratio (L.O.R.) [%]:	82	Power factor:	On request
Beam angle [°]:	36°	Inrush current:	18 A / 250 µs
CRI:	80	Overtoltage protection:	2kV Common mode & 1kV Differential mode
Colour temperature [K]:	4000		

Easy

Design iGuzzini

iGuzzini

Last information update: September 2019



Ø 153 mm - neutral white - electronic

Product code
 QF59
Technical description

Round fixed luminaire designed to use LED lamps with C.o.B. technology. Version with rim for surface-mounting. Reflector vacuum-metallised with aluminium vapours with an anti-scratch protective layer. Dissipater made of painted grey die-cast aluminium. Product complete with LED lamp in neutral white colour tone (4000K). General lighting beam.

Installation

Recessed using torsion springs which allow easy installation in false ceilings with thicknesses ranging from 1 mm to 20 mm.

Dimension (mm)

Ø163x82

Colour

White (01) | White / Aluminium (39)

Weight (Kg)

0.68

Mounting

ceiling surface

Wiring

product complete with electronic components

Complies with EN60598-1 and pertinent regulations



IP20

IP54

On the visible part of the product once installed



pending

Product configuration: QF59.39**Product characteristics**

Total lighting output [Lm]: 2970
 Total power [W]: 24.3
 Luminous efficacy [Lm/W]: 122.2
 Life Time: > 50,000h - L80 - B10 (Ta 25°C)

Total luminous flux at or above an angle of 90° [Lm]: 0
 Emergency luminous flux [Lm]: /
 Voltage [V]: -
 Number of optical assemblies: 1

Optical assembly Characteristics Type 1

Light Output Ratio (L.O.R.) [%]: 90
 Lamp code: LED
 ZVEI Code: LED
 Nominal power [W]: 22
 Nominal luminous [Lm]: 3300
 Lamp maximum intensity [cd]: /
 Beam angle [°]: /

Number of lamps for optical assembly: 1
 Socket: /
 Ballast losses [W]: 2.3
 Colour temperature [K]: 4000
 CRI: 80
 Wavelength [nm]: /
 MacAdam Step: 2

Deep Frame

Design iGuzzini

iGuzzini

Last information update: December 2019



Deep Frame - 1 element - CoB warm LED - wide flood beam

Product code
P918**Technical description**

Individual recessed luminaire for LED lamp. Version with a perimeter frame. Shaped sheet steel structural frame. Die-cast aluminium, twin swivel universal joint located in a position set back from the installation surface to guarantee a high level of visual comfort. Tilts $\pm 30^\circ$ around both the horizontal and vertical axes. Die-cast aluminium lighting body designed to optimise heat dispersal. High efficiency aluminium reflector - wide flood angle. High color rendering index, warm white LED lamp. Glass cover. Mechanical installation system. Control gear unit included.

Installation

Recessed in 1 to 30mm thick false ceilings - secured with manually adjustable metal brackets. Preparation hole 167 x 167.

Dimension (mm)
180x180x127**Colour**

White (01) | Gray / Black (74)

Weight (Kg)
1.5**Mounting**

ceiling recessed

Wiring

Complete with electronic control gear unit connected to the luminaire. Wiring for connecting to mains network on driver terminal board.

Notes

Accessories available: refractor for elliptical flow distribution - interchangeable reflector.

Complies with EN60598-1 and pertinent regulations

**Product configuration: P918****Technical data**

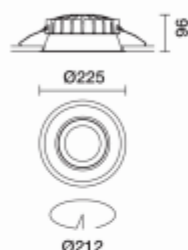
Im system:	2354	MacAdam Step:	3
W system:	30.8	Life Time LED 1:	> 50,000h - L80 - B10 (Ta 25°C)
Im source:	3100	Ballast losses [W]:	3.8
W source:	27	Lamp code:	LED
Luminous efficiency (lm/W, 76.4 real value):		Number of lamps for optical assembly:	1
Im in emergency mode:	-	ZVEI Code:	LED
Total light flux at or above an angle of 90° [lm]:	0	Number of optical assemblies:	1
Light Output Ratio (L.O.R.) [%]:	76	Power factor:	On request
Beam angle [°]:	48°	Inrush current:	18 A / 250 µs
CRI:	90	Overvoltage protection:	2kV Common mode & 1kV Differential mode
Colour temperature [K]:	3000		

Easy

Design iGuzzini

iGuzzini

Last information update: July 2019



Ø 212 mm - warm white - electronic - UGR<19

Product code
 QF97
Technical description

Round fixed luminaire designed to use LED lamps with C.o.B. technology. Version with rim for surface-mounting. Reflector vacuum-metallised with aluminium vapours with an anti-scratch protective layer. Dissipater made of painted grey die-cast aluminium. Product complete with LED lamp in neutral white colour tone (4000K). Light beam with UGR<19 L<3000 cd/m2 ideal for environments with video terminals.

Installation

Recessed using torsion springs which allow easy installation in false ceilings with thicknesses ranging from 1 mm to 20 mm.

Dimension (mm)

Ø226x96

Colour

White / Aluminium (39)

Weight (Kg)

1.03

Mounting

ceiling surface

Wiring

product complete with electronic components

Complies with EN60598-1 and pertinent regulations



IP20



IP44

On the visible part of the product once installed



pending

Product configuration: QF97.39**Product characteristics**

Total lighting output [Lm]: 2940
 Total power [W]: 26.3
 Luminous efficacy [Lm/W]: 111.8
 Life Time: > 50,000h - L80 - B10 (Ta 25°C)

Total luminous flux at or above an angle of 90° [Lm]: 0
 Emergency luminous flux [Lm]: /
 Voltage [V]: -
 Number of optical assemblies: 1

Optical assembly Characteristics Type 1

Light Output Ratio (L.O.R.) [%]: 84
 Lamp code: LED
 ZVEI Code: LED
 Nominal power [W]: 23
 Nominal luminous [Lm]: 3500
 Lamp maximum intensity [cd]: /
 Beam angle [°]: /

Number of lamps for optical assembly: 1
 Socket: /
 Ballast losses [W]: 3.3
 Colour temperature [K]: 3000
 CRI: 80
 Wavelength [Nm]: /
 MacAdam Step: 2

Underscore15

Design iGuzzini

iGuzzini

Last information update: January 2020



Flexible strip - 5m - white LEDs.

Product code
N179

Technical description

Product for linear lighting – fitted with monochromatic white LEDs with high colour rendering – assembled on white flexible circuit; transparent silicone sheath outer protection with end caps. IP65 protection rating for the full-length strip (undivided). The circuit ends include connectors with IP20 protection rating, therefore the installer is responsible for adapting the insulation level of the connectors. Supplied in 5-metre coils wound on special supports; supplied with a connection kit for connections in line or to power supply. The strip can be cut into 125mm-long sections; in case of intermediate cuts, ensure that the cut ends are carefully sealed so that the original protection conditions are restored. LED characteristics: White 4000K - CRI 90 - SDCM 3 - 56 LEDs/m - 112° beam angle - 96 W in total - 24V power supply. Control gears to be ordered separately.

Installation

Fixing kit: clips (code MWG2: 10 pieces) and rigid aluminium support (code MWG1: 5 pieces x 1 m) - The strip is configured for being combined with all Underscore 15 profiles.

Dimension (mm)
5000x11x4Colour
White (01)Weight (Kg)
0.21Mounting
wall arm/ceiling surface

Wiring

Constant voltage ballast ordered separately; available for single coil (ON-OFF code MZ14 / DALI dimmable code MZ15). The control gear and coil are connected through connectors (IP20) supplied with the strip package.

Notes

To ensure correct heat dissipation, the strip should be used in conjunction with the available profiles. The relevant connectors guarantee an IP20 protection rating. If the strip is cut (at the configured points), ensure that the various parts are carefully sealed once they have been joined together.

Complies with EN60598-1 and pertinent regulations

Product configuration: N179+LENGTH1
LENGTH1: Length 1m - 1m

Product characteristics

Total lighting output [Lm]: 1680
Total power [W]: 19.2
Luminous efficacy [Lm/W]: 87.5
Life Time: 40,000h - L70 (Ta 25°C)

Total luminous flux at or above an angle of 90° [Lm]: 71
Emergency luminous flux [Lm]: /
Voltage [V]: 24
Number of optical assemblies: 1

Optical assembly Characteristics Type 1

Light Output Ratio (L.O.R.) [%]: 100
Lamp code: LED
ZVEI Code: LED
Nominal power [W]: 19.2
Nominal luminous [Lm]: 1680
Lamp maximum intensity [cd]: /
Beam angle [°]: /

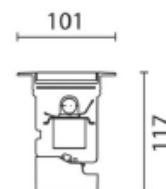
Number of lamps for optical assembly: 1
Socket: /
Ballast losses [W]: 0
Colour temperature [K]: 4000
CRI: 90
Wavelength [Nm]: /
MacAdam Step: 3

Linealuce

Design Jean Michel Wilmotte

iGuzzini

Last information update: March 2020



Linear Recessed - Neutral White LED - Electronic control gear 220-240V ac - L=1129 mm - R13 anti-slip glass - Flood Optic

Product code
BN00

Technical description

Direct light luminaire, designed to use monochrome LED lamps. Ground-, wall- and ceiling-recessed. Consists of a body and outer casing for installation, to be ordered separately. Extruded aluminium body, with die-cast aluminium end caps complete with silicone seals. Coated with liquid acrylic paint with a high level of weather and UV ray resistance. Lower PPS (polyphenylene sulfide) power box. The top of the optical assembly is closed by an 8 mm thick anti-slip glass screen (conforming to class R13 in accordance with DIN 51130), fixed with silicone. Complete with multi-LED power plate in Neutral White. Fitted with a PMMA diffusing filter and optics with plastic (methacrylate) lens for Flood lighting. The lower box has two PG11 nickel-plated brass cable glands for pass-through wiring, suitable for cables Ø6.5-11 mm. To fix the optical assembly to the outer casing the product has a quick coupling system using Allen keys. Outer casing for installation made of aluminium with technopolymer covers, to be ordered separately. All external screws used are made of A2 stainless steel. The luminaire technical characteristics conform to EN 60598-1 standards and particular requirements.

Installation

Ground- and wall-recessed using the outer casing, to be ordered separately. For ground installation a drainage channel must be created or gravel inserted for drainage under the outer casing before installation, to guarantee the degree of protection stated. For ceiling-mounting with plasterboard panels (1-30 mm thick), make the preparation openings as indicated in the instructions sheet and use the accessory with code 5926 (kit containing steel cables with reinforcement plates).

Dimension (mm)

1129x101x117

Colour

Grey (15)

Weight (Kg)

3.8

Mounting

wall recessed|ceiling recessed|ground recessed

Wiring

Equipped with electronic control gear 220-240V ac, 50/60Hz contained in the luminaire. For electrical connection the product has a lower box holding the terminal board (2-pin, max. 6mm²) and double cable glands for pass-through wiring.

Notes

Product complete with LED lamp. The frame, glass, optical assembly and outer casing together guarantee a maximum static load resistance of 1000 kg.

Complies with EN60598-1 and pertinent regulations

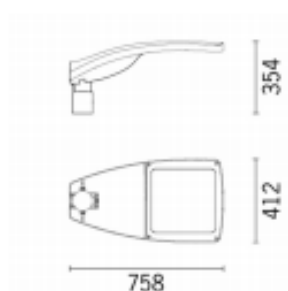


Wow

Design Plano Design

iGuzzini

Last information update: December 2019



Pole-mounted system – A60 optic - Neutral White - Dali - ø46-60-76mm

Product code
ED78
Technical description

Outdoor luminaire with direct light asymmetric optic for increased visual comfort, designed to use LED lamps. The optical assembly and the pole attachment system are made of EN1706AC 46100LF aluminium alloy and subjected to a multi-step, pre-treatment process, in which the main phases are: degreasing, fluorozirconation (a protective surface film) and sealing (with a nano-structured silane layer). The painting stage consists of a primer and a liquid acrylic paint, cured at 150 °C, with a high level of weather resistance. Option of also adjusting, with a graduated scale, the inclination in relation to the road surface of +15°/-10° (in 5° steps) for a pole-top installation and +5°/20° (in 5° steps) for a lateral installation. 5 mm thick tempered sodium-calcium closure glass. The glass secured to the frame closes the led optical assembly which is secured to the components assembly with a hinge and 2 screws. The high IP rating is guaranteed by the silicone gasket placed between the two elements. Complete with circuit featuring monochrome LEDs and silver aluminium reflectors. LED assembly can be replaced directly on site. Possibility of replacing the LEDs in groups of 12 in the laboratory. DALI electronic control gear. Control gear connected with quick-coupling connectors. Driver with automatic internal temperature control system. Tool-free removable control gear plate unit. The optical assembly is fixed to the wall-mounted or pole-top attachment with two clamping screws and two safety grub screws facilitate assembly. The light flow emitted in the upper hemisphere of the system in the horizontal position is null (in conformity with the strictest standards for the prevention of light pollution). All external screws are made of stainless steel.

Installation

The floodlight can be installed with pole-top or lateral mounting using a die-cast aluminium pole-top for diameters of 46/60/76 mm. Diameters from 60 to 76 mm without using the standard adaptor, and from 46 to 60 mm with the adaptor. Secured to the pole by two bolts and two safety locking nuts.

Dimension (mm)
758x412x354

Colour
Grey (15)

Weight (Kg)
14.3

Mounting
wall arm/pole-top
Wiring

The pole-top attachment guarantees the completely safe passage of power cables, avoiding piercing. 6-pole terminal board for ø 7-14mm cables. Overvoltage protection: 10KV Common Mode and 6KV Differential Mode

Complies with EN60598-1 and pertinent regulations

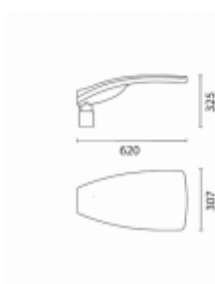


Wow

Design Piano Design

iGuzzini

Last information update: January 2020



Pole-mounted system – A60 optic - Neutral White - Dali - ø46-60-76mm

Product code
 EC39
Technical description

Outdoor luminaire with direct light asymmetric optic for increased visual comfort, designed to use LED lamps. The optical assembly and the pole attachment system are made of EN1706AC 46100LF aluminium alloy and subjected to a multi-step, pre-treatment process, in which the main phases are: degreasing, fluorozirconation (a protective surface film) and sealing (with a nano-structured silane layer). The painting stage consists of a primer and a liquid acrylic paint, cured at 150 °C, with a high level of weather resistance. Option of also adjusting, with a graduated scale, the inclination in relation to the road surface of +15°/-10° (in 5° steps) for a pole-top installation and +5°/20° (in 5° steps) for a lateral installation. 5 mm thick tempered sodium-calcium closure glass. The glass secured to the frame closes the led optical assembly which is secured to the components assembly with a hinge and 2 screws. The high IP rating is guaranteed by the silicone gasket placed between the two elements. Complete with circuit featuring monochrome LEDs and silver aluminium reflectors. LED assembly can be replaced directly on site. Possibility of replacing the LEDs in groups of 12 in the laboratory. DALI electronic control gear. Control gear connected with quick-coupling connectors. Driver with automatic internal temperature control system. Tool-free removable control gear plate unit. The optical assembly is fixed to the wall-mounted or pole-top attachment with two clamping screws and two safety grub screws facilitate assembly. The light flow emitted in the upper hemisphere of the system in the horizontal position is null (in conformity with the strictest standards for the prevention of light pollution). All external screws are made of stainless steel.

Installation

The floodlight can be installed with pole-top or lateral mounting using a die-cast aluminium pole-top for diameters of 46/60/76 mm. Diameters from 60 to 76 mm without using the standard adaptor, and from 46 to 60 mm with the adaptor. Secured to the pole by two bolts and two safety locking nuts.

Dimension (mm)
 620x307x325

Colour
 Grey (15)

Weight (Kg)
 9

Mounting
 wall arm|pole-top
Wiring

The pole-top attachment guarantees the completely safe passage of power cables, avoiding piercing. 6-pole terminal board for ø 7-14mm cables. Overvoltage protection: 10KV Common Mode and 6KV Differential Mode

Complies with EN60598-1 and pertinent regulations

